

Crawler CND IP68

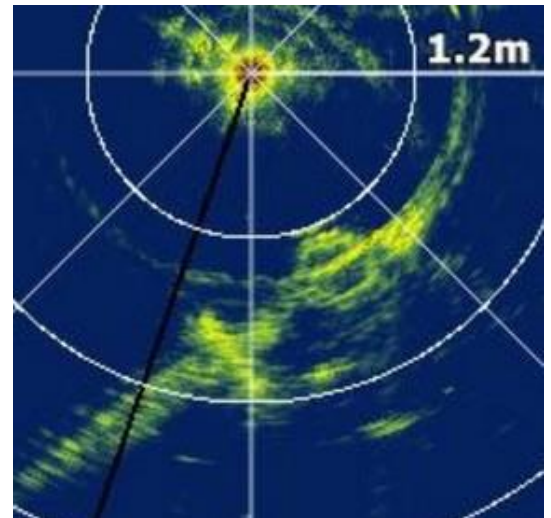
SUBMERGED CRAWLER FOR IN-SERVICE TANK FLOOR INSPECTION

The Crawler CND IP68 is designed for in-service inspection of firewater tank floors on petrochemical and SEVESO sites, without draining. Equipped with UT sensors, C-Scan arm, cameras and a sediment brush system, it performs complete floor integrity assessments while the tank remains in operation.

Zero draining, zero shutdown, zero confined space entry. The ideal solution for regulatory firewater tank inspections (APSAD R1) on SEVESO-classified sites.

FEATURES

- ▶ Submerged: IP68 full immersion rated
- ▶ Compact: fits through 500mm manhole
- ▶ Brush: clears up to 5mm sediment
- ▶ Accurate: A-scan, B-scan & C-scan 300mm arm
- ▶ Vision: HD cameras, LED lights & sonar



KPIs

No draining required: tank remains in service.

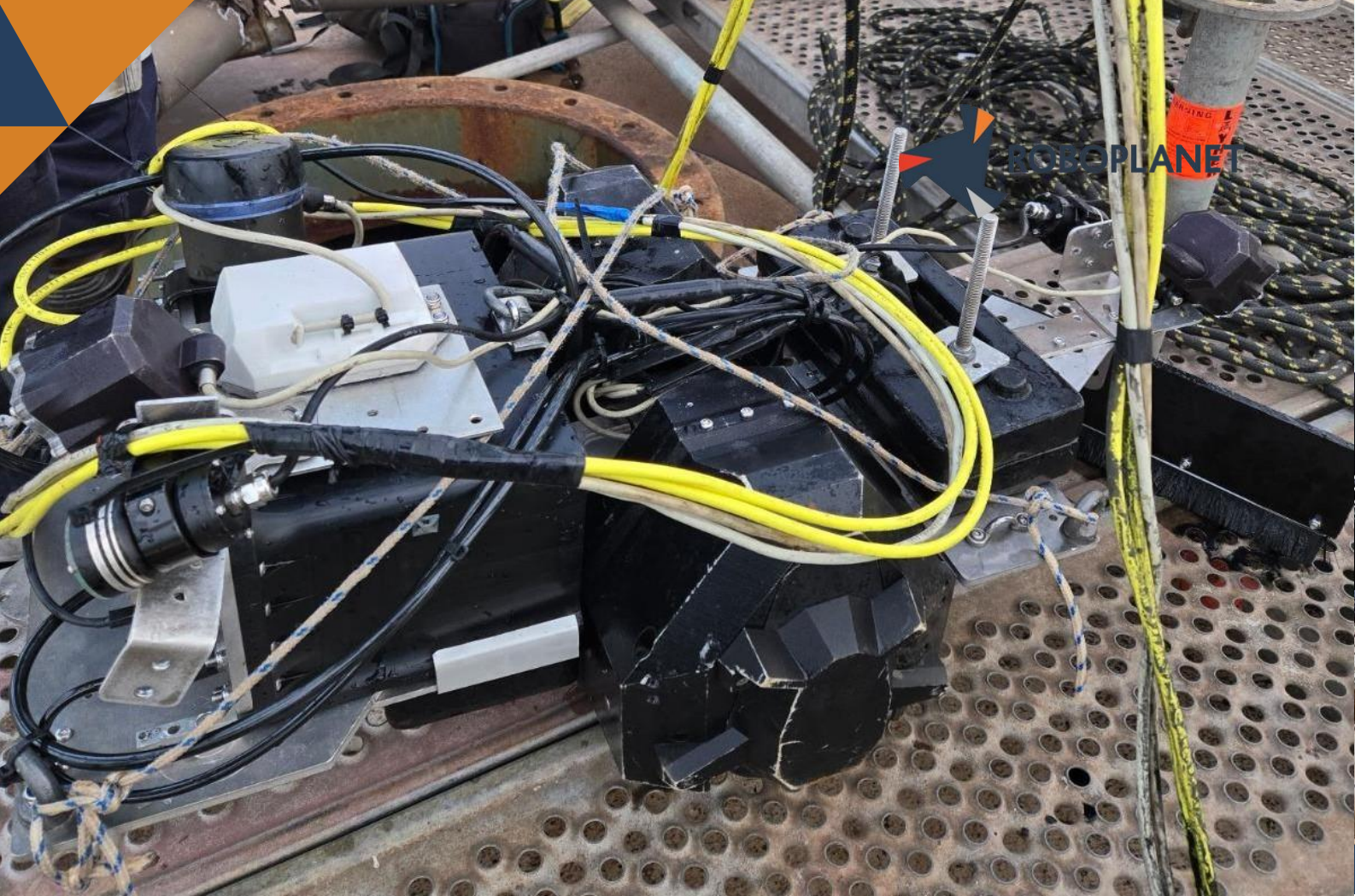
No confined space entry: zero operator exposure.

Compliant: APSAD R1, API 653, DT94, CODRES.

Sediment brush: clears up to 5mm for UT contact.

Tested on 20+ petrochemical tanks. SEVESO compatible.





IP68 Submerged Magnetic Crawler

- UT sensor 5Mhz + C-Scan arm 300mm
- HD cameras + LED lighting + sediment brush system
- Sonar for sediment mapping and navigation

Umbilical 100m	Power, data & video cable
Datascan - Field driving software	✓
Compatible with non-ROBOPLANET UT system	✓
Datareport - Automated report generation software & B-scan analysis	✓
Wireless UT acquisition software on PC	✓
Onboard Camera with live display	✓

Options : Umbilical length, ATEX certification, sonar module, high-pressure sediment removal, maintenance and spare parts, and more.



Closer to assets, away from risks

SPECIFICATIONS

INSPECTED SURFACE

- Plates : Carbon steel & Stainless steel
- Water temperature : 0°C to 40°C
- Floor plate thickness : 2 - 50mm
- Max sediment for UT : 5mm (with brush)
- Max immersion depth : 20m

CARRIER

- Dimensions : compatible manhole 500mm
- Weight : approx. 20kgs
- Max speed : 5cm/s submerged
- Magnetic hold : adapted for floor plates
- Locomotion : tracked - sediment capable
- IP68 : full immersion rated
- Rugged subsea connectors
- Encoding precision : 0.1% FS

SEDIMENT MANAGEMENT

- Brush clearance: up to 5mm sediment
- High-pressure sediment removal option
- Sonar mapping of sediment layer

POWER SUPPLY

- Supply: via umbilical
- Type: continuous power
- Autonomy: unlimited (tethered)

ULTRASONIC MEASUREMENTS

- Sensors type : Ultrasonic, dual Emission/Reception
- Standard precision : 0.1mm
- Frequency/Diameter : 5Mhz/13mm
- Voltage : 0V - 200V
- Sampling frequency : 80Mhz
- Adjustable gain : 0 - 60 dB
- Visualization : A-scan, B-scan & C-scan
- Reporting : automated report, A-scan, B-scan & C-scan
- C-Scan arm : 300mm scanning width

SIGNAL PROCESSING

- Hardware: ruggedized field PC
- Gates: Adjustable
- Display: A-scan, B-scan & C-scan, real time
- Data record: A-scan, B-scan & C-scan
- Save format: .csv ; .jpg ; Datareport

OPERATING CONDITIONS

- Operating temperature: 0°C to 40°C
- Environment: submerged operation
- Sites: SEVESO & petrochemical

